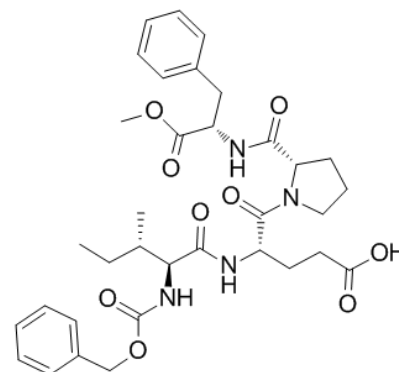


**Product Name** : CH-5450  
**Cat. No.** : PC-45053  
**CAS No.** : 252557-97-4  
**Molecular Formula** : C<sub>34</sub>H<sub>44</sub>N<sub>4</sub>O<sub>9</sub>  
**Molecular Weight** : 652.7346  
**Target** : Other Targets  
**Solubility** : DMSO: ≥ 43 mg/mL



## Biological Activity

A potent, peptide-inhibitor of human chymase with  $K_i$  of 1 nM; causes an almost complete inhibition of the AI-induced contractions combined with Enalaprilat; depresses the (Pro11-,D-Ala12)-AI-induced contractions at 10  $\mu$ M.

## References

Bastos M, et al. Proc Natl Acad Sci U S A. 1995 Jul 18;92(15):6738-42.

Waldeck K, et al. Br J Pharmacol. 1997 Jul;121(6):1081-6.

He S, et al. J Pharmacol Exp Ther. 1999 Nov;291(2):517-23.

**Caution: Product has not been fully validated for medical applications. Lab Use Only!**

E-mail: tech@probechem.com